

M-CSF/ CSF1, Mouse, Recombinant

货号：PCK043

产品信息

别名	Macrophage colony-stimulating factor 1; CSF-1; MCSF; Csf1; Csfm
物种	Mouse
表达宿主	Human Cells
序列信息	Lys33-Glu262
检索号	P07141
分子量	26.0 kDa
生物活性	Measured in a cell proliferation assay using M-NFS-60 mouse myelogenous leukemia lymphoblast cells. The ED50 for this effect is 0.04-0.2 ng/ml.

产品特性

纯度	>95% as determined by reducing SDS-PAGE.
内毒素	<1.0 EU per μg as determined by LAL test.
保存	Lyophilized protein should be stored at $-5\sim-20^{\circ}\text{C}$, stable for one year after receipt. Reconstituted protein solution can be stored at $2-8^{\circ}\text{C}$ for 2-7 days. Aliquots of reconstituted samples are stable at $-5\sim-20^{\circ}\text{C}$ for 3 months.
运输	Ambient temperature or ice pack.
制剂	Lyophilized from a $0.2\ \mu\text{m}$ filtered solution of PBS, pH7.4.



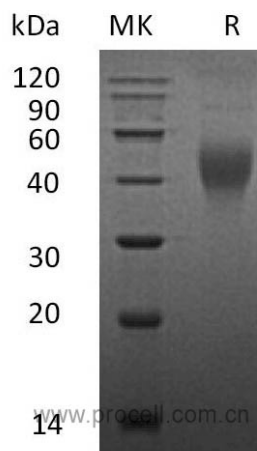
复融

Always centrifuge tubes before opening. Do not mix by vortex or pipetting. It is not recommended to reconstitute to a concentration less than 100 µg/ml. Dissolve the lyophilized protein in distilled water. Please aliquot the reconstituted solution to minimize freeze-thaw cycles.

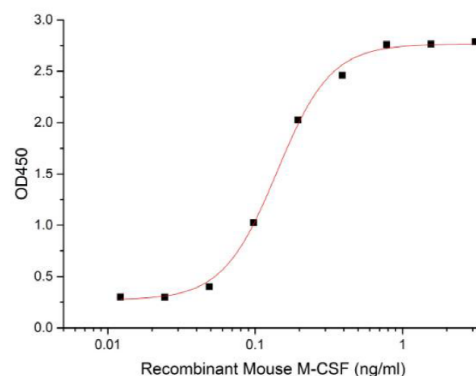
背景介绍

Macrophage colony-stimulating factor 1 (M-CSF) is a single-pass type I membrane Protein. It is a hematopoietic Growth Factor that is involved in the proliferation, differentiation, and survival of monocytes, macrophages, and bone marrow progenitor cells. M-CSF affects macrophages and monocytes in several ways, including stimulating increased phagocytic and chemotactic activity, and increased tumour cell cytotoxicity. The role of M-CSF is not only restricted to the monocyte/macrophage cell lineage. By interacting with its membrane Receptor, M-CSF also modulates the proliferation of earlier hematopoietic progenitors and influence numerous physiological processes involved in immunology, metabolism, fertility and pregnancy.

SDS-PAGE



生物活性



Measured in a cell proliferation assay using M-NFS-60 mouse myelogenous leukemia lymphoblast cells. The ED50 for this effect is 0.04-0.2 ng/ml.

