

TGFβ1/ TGFB1, Mouse, Recombinant

货号：PCK099

产品信息

别名	TGF-beta-1; CED; DPD1; TGFB; TGF-b1; TGFB1; CEDLAP; latency-associated peptide; TGFbeta; TGF-beta 1 protein; transforming growth factor beta-1; TGF-β1; TGF beta1; TGFbeta 1; TGF-beta 1; TGFbeta
物种	Mouse
表达宿主	Human Cells
序列信息	Ala279-Ser390
检索号	P04202
分子量	12.8 kDa
生物活性	Measured by its ability to inhibit IL-4-dependent proliferation of TF-1 human erythroleukemic cells. The ED50 for this effect is 5-25 pg/ml.

产品特性

纯度	>95% as determined by reducing SDS-PAGE.
内毒素	< 1.0 EU per µg as determined by LAL test.
保存	Lyophilized protein should be stored at -5~-20°C, stable for one year after receipt. Reconstituted protein solution can be stored at 2-8°C for 2-7 days. Aliquots of reconstituted samples are stable at -5~-20°C for 3 months.
运输	Ambient temperature or ice pack.
制剂	Lyophilized from a 0.2 µm filtered solution of 4mM Hcl.



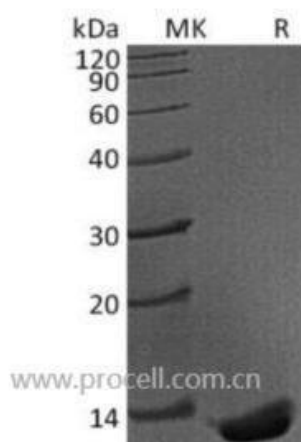
复融

Always centrifuge tubes before opening. Do not mix by vortex or pipetting. It is not recommended to reconstitute to a concentration less than 100 µg/ml. Dissolve the lyophilized protein in 4mM Hcl. Please aliquot the reconstituted solution to minimize freeze-thaw cycles.

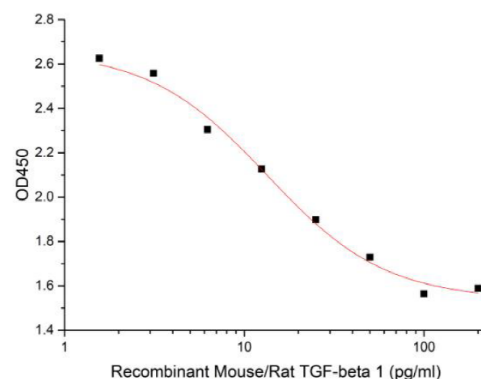
背景介绍

Transforming Growth Factor beta 1 (TGFβ1) is the prototype of a growing superfamily of peptide growth factors and plays a prominent role in a variety of cellular processes, including cell-cycle progression, cell differentiation, reproductive function, development, motility, adhesion, neuronal growth, bone morphogenesis, wound healing, and immune surveillance. TGF-β1, TGF-β2 and TGF-β3 signal via the same heteromeric receptor complex, consisting of a ligand binding TGF-β Receptor type II (TβR-II), and a TGF-β Receptor type I (TβR-I). Signal transduction from the receptor to the nucleus is mediated via SMADs. TGF-β expression is found in cartilage, bone, teeth, muscle, heart, blood vessels, haematopoietic cells, lung, kidney, gut, liver, eye, ear, skin, and the nervous system.

SDS-PAGE



生物活性



Measured by its ability to inhibit IL-4-dependent proliferation of TF-1 human erythroleukemic cells. The ED50 for this effect is 5-25 pg/ml.

