

## IL-23R (C-Fc), Human, Recombinant

货号 : PCK153

### 产品信息

别名	Interleukin-23 Receptor; IL23R; IL-23 Receptor; IL-23R
物种	Human
表达宿主	Human Cells
序列信息	Gly24-Asp353
检索号	Q5VWK5
分子量	65.0 kDa
标签	C-Fc
生物活性	Immobilized Human IL-23R-Fc at 10µg/ml (100 µl/well) can bind Human IL-23-His. The ED50 of Human IL-23-His is 0.248 ug/ml.

### 产品特性

纯度	>90% as determined by reducing SDS-PAGE.
内毒素	<1.0 EU per µg as determined by LAL test.
保存	Lyophilized protein should be stored at -5~-20°C, stable for one year after receipt. Reconstituted protein solution can be stored at 2-8°C for 2-7 days. Aliquots of reconstituted samples are stable at -5~-20°C for 3 months.
运输	Ambient temperature or ice pack.
制剂	Lyophilized from a 0.2 µm filtered solution of PBS, pH7.4.



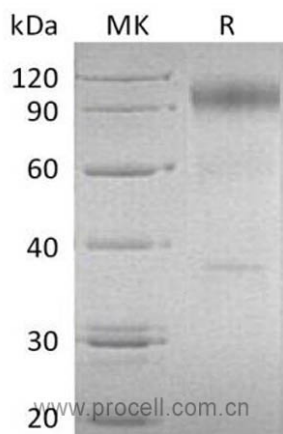
## 复融

Always centrifuge tubes before opening. Do not mix by vortex or pipetting. It is not recommended to reconstitute to a concentration less than 100 µg/ml. Dissolve the lyophilized protein in distilled water. Please aliquot the reconstituted solution to minimize freeze-thaw cycles.

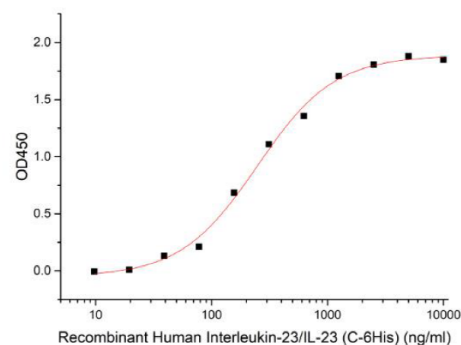
## 背景介绍

Interleukin 23 Receptor (IL23R) is a type I Cytokine Receptor for IL23. IL23 Receptor complex is comprised of two subunits, the IL12Rβ1 subunit, which is shared with several Cytokines, and a subunit that is unique to IL-23. IL23, after binding to IL23R, activates memory T cells and mediates pro-inflammatory activities in part by the production of IL17 through activation of TH17 lymphocytes. IL23R is expressed on T cells, NK cells, dendritic cells, and macrophages. In fact, polymorphisms of the IL23R gene were reported to be associated with susceptibility to inflammatory diseases and autoimmune diseases such as psoriasis, multiple sclerosis, Graves' s opthalmopathy and inflammatory bowel diseases. The IL23R is known to be critically involved in the carcinogenesis of different malignant tumor.

## SDS-PAGE



## 生物活性



Immobilized Human IL-23R-Fc at 10µg/ml (100 µl/well) can bind Human IL-23-His. The ED50 of Human IL-23-His is 0.248 ug/ml.

