

IL-17A/ F (C-6His), Human, Recombinant

货号 : PCK176

产品信息

别名	IL-17A/ F Heterodimer; IL-17A&amp;IL-17F Heterodimer
物种	Human
表达宿主	Human Cells
序列信息	Gly24-Ala155&Arg31-Gln163
检索号	Q16552&AAH70124.1
分子量	15.1&16 KDa
标签	C-6His
生物活性	Loaded Biotinylated Human IL-17RA -His-Avi on SA Biosensor, can bind Human IL-17A&17F-His with an affinity constant of 8.6 pM as determined in BLI assay.

产品特性

纯度	>90% as determined by reducing SDS-PAGE.
内毒素	<1.0 EU per µg as determined by LAL test.
保存	Lyophilized protein should be stored at -5~-20°C, stable for one year after receipt. Reconstituted protein solution can be stored at 2-8°C for 2-7 days. Aliquots of reconstituted samples are stable at -5~-20°C for 3 months.
运输	Ambient temperature or ice pack.
制剂	Lyophilized from a 0.2 µm filtered solution of 20mM PB, 150mM NaCl, 1mM EDTA, pH 7.4.



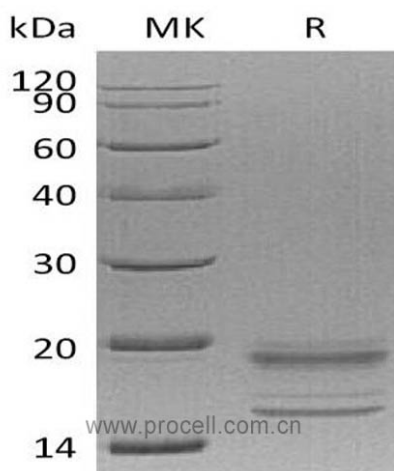
复融

Always centrifuge tubes before opening. Do not mix by vortex or pipetting. It is not recommended to reconstitute to a concentration less than 100 µg/ml. Dissolve the lyophilized protein in distilled water. Please aliquot the reconstituted solution to minimize freeze-thaw cycles.

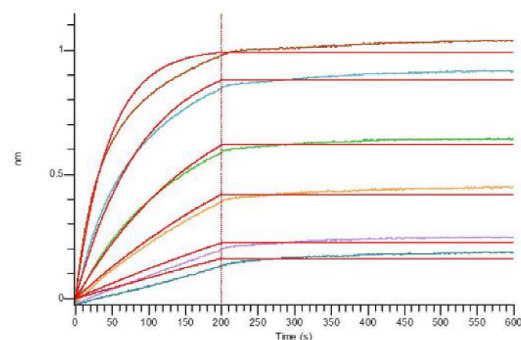
背景介绍

The IL-17 family include IL-17A, IL-17B, IL-17C, IL-17D, IL-17E (also called IL-25), and IL-17F. The family is comprised of at least six proinflammatory Cytokines that share a conserved cysteine-knot structure but diverge at the N-terminus. All members of the IL-17 family have a similar Protein structure, with four highly conserved cysteine residues critical to their 3-dimensional shape, yet they have no sequence similarity to any other known Cytokines. IL-17 family members are glyco Proteins secreted as dimers that induce local Cytokine production and recruit granulocytes to sites of inflammation. IL-17 is induced by IL-15 and IL-23, mainly in activated CD4+ T cells distinct from Th1 or Th2 cells. IL-17F is the most homologous to IL-17, but is induced only by IL-23 in activated monocytes.

SDS-PAGE



生物活性



Loaded Biotinylated Human IL-17RA -His-Avi on SA Biosensor, can bind Human IL-17A&17F-His with an affinity constant of 8.6 pM as determined in BLI assay.

