

IL-4R α / CD124 (C-mFc), Human, Recombinant

货号 : PCK198

产品信息

别名	Interleukin-4 Receptor subunit alpha; IL-4 Receptor subunit alpha; IL-4R subunit alpha; IL-4R-alpha; IL-4RA; CD124; IL-4-binding Protein; IL4-BP; IL4R; IL4RA
物种	Human
表达宿主	Human Cells
序列信息	Met26-Gln231
检索号	P24394
分子量	50.2 kDa
生物活性	Loaded Human IL-4-His on HIS1K Biosensor, can bind Human IL-4RA-mFc with an affinity constant of 0.12 nM as determined in BLI assay.

产品特性

纯度	>95% as determined by reducing SDS-PAGE.
内毒素	<1.0 EU per μ g as determined by LAL test.
保存	Lyophilized protein should be stored at -5~-20°C, stable for one year after receipt. Reconstituted protein solution can be stored at 2-8°C for 2-7 days. Aliquots of reconstituted samples are stable at -5~-20°C for 3 months.
运输	Ambient temperature or ice pack.
制剂	Lyophilized from a 0.2 μ m filtered solution of PBS, pH7.4.



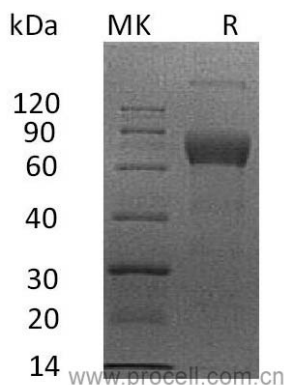
复融

Always centrifuge tubes before opening. Do not mix by vortex or pipetting. It is not recommended to reconstitute to a concentration less than 100µg/ml. Dissolve the lyophilized protein in distilled water. Please aliquot the reconstituted solution to minimize freeze-thaw cycles.

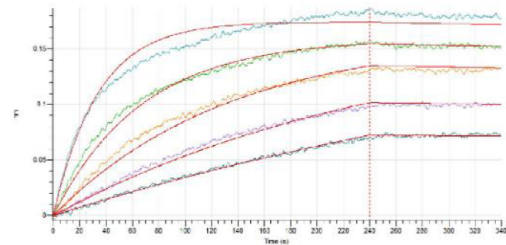
背景介绍

Interleukin 4 Receptor alpha (IL4-Ra) is a widely expressed 140 kDa transmembrane glyco Protein in the class I Cytokine Receptor family. Mature human IL4-Ra consists of a 207 amino acid (aa) extracellular domain (ECD) that contains a Cytokine binding region and one fibronectin type III domain, a 24 aa transmembrane segment, and a 569 aa cytoplasmic domain that contains one Box 1 Motif and one ITIM Motif. IL4-Ra plays an important role in Th2-biased immune responses, alternative macrophage activation, mucosal immunity, allergic inflammation, tumor progression, and atherogenesis. Soluble forms of IL4-Ra, generated by alternate splicing or proteolysis, retain Ligand binding properties and inhibit IL-4 bioactivity.

SDS-PAGE



生物活性



Loaded Human IL-4-His on HIS1K Biosensor, can bind Human IL-4RA-mFc with an affinity constant of 0.12 nM as determined in BLI assay.

